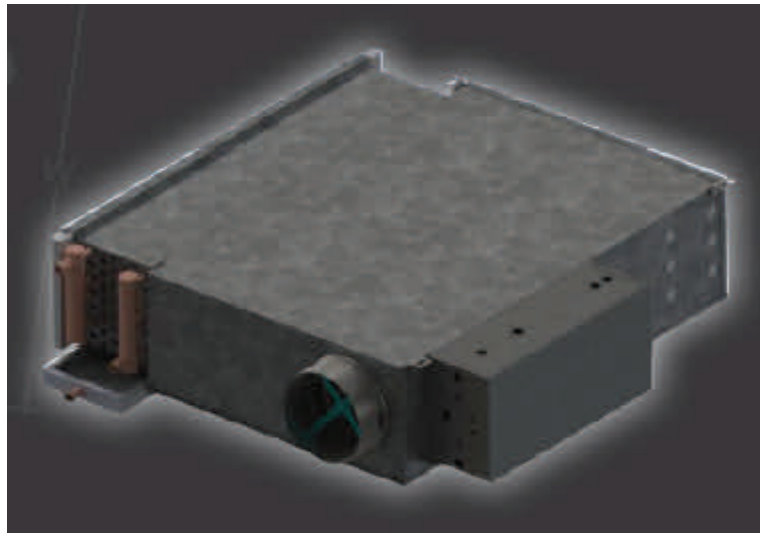




Now Available From



LSC

(fan powered with cooling)

Application

The LSC fan powered terminal unit features a modulating VAV primary air inlet and a cooling coil mounted on the plenum inlet to provide the proper amount of conditioned air into the space. One application is to work as part of a dedicated outdoor air system (DOAS) where the primary air inlet is sized to provide the fresh air zone ventilation requirements from the DOAS air handler and the cooling coil provides additional sensible cooling. The LSC is also used in retrofit applications where existing air handling units may be undersized to handle a new load, and in tenant spaces where after-hours cooling is required in a building system that may shut down at night. Due to an integral condensate pan, the LSC can provide a worry-free and a cost effective alternative to chilled beam systems.

Features & Benefits

- 2, 4 or 6 row cooling coil for application flexibility
- Dual wall drain pan for condensate management
- Low profile to fit tight air plenum spaces
- AeroCross™ multipoint velocity sensor for airflow accuracy
- Conventional terminal unit design for ease of installation

Factory Options

- Direct Digital, Analog, or Pneumatic controls
- Induced air filter for indoor air quality
- 4 liner options, including exclusive EcoShield cotton fiber
- Hot water and electric reheat
- ECM motors

For more information visit www.titus-hvac.com or for any questions, catalog binders, please contact sales@airproductsequip.com